

Office for rent in calle Sofora

Ref. AOM2405014

Unit 3 1

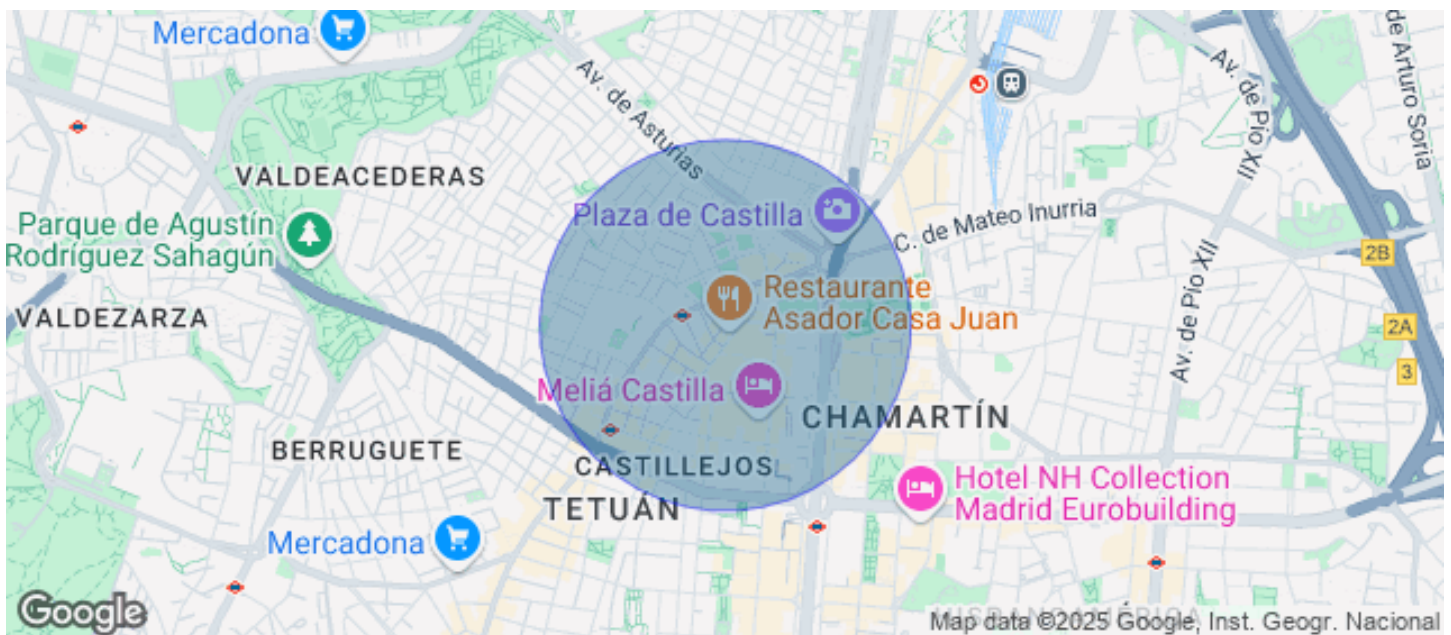
Madrid / Castilla

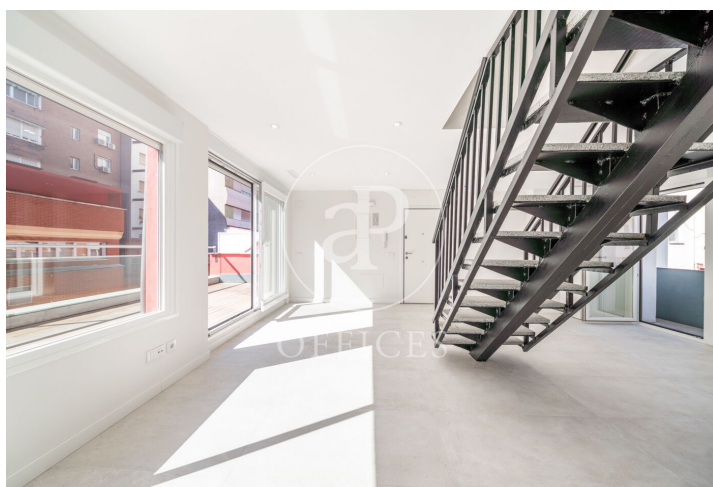
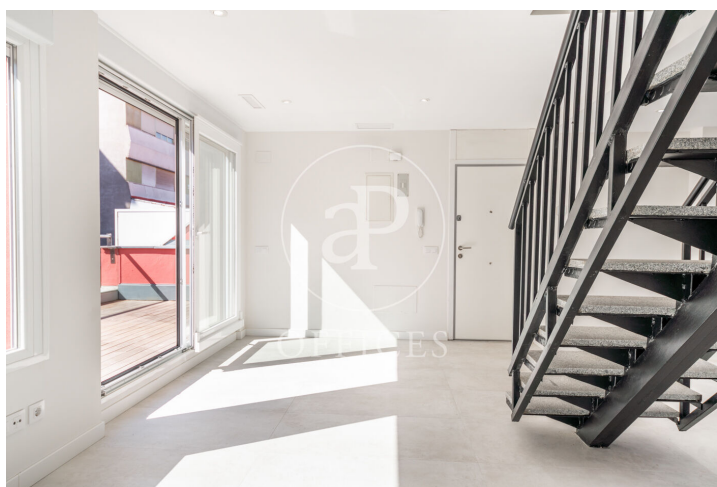
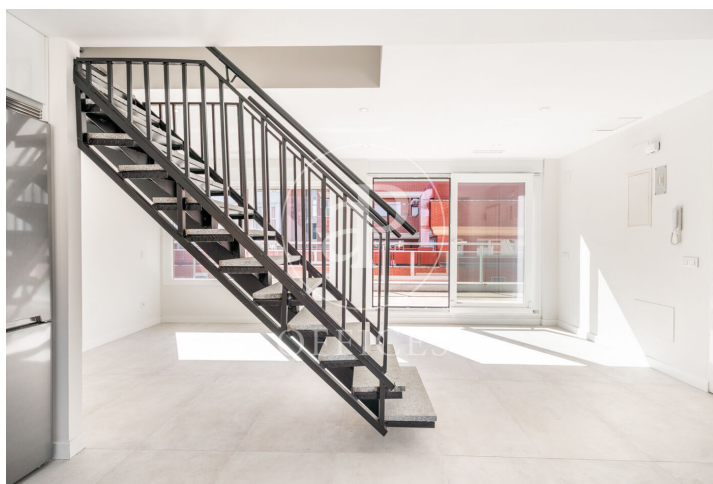
- ✓ A/C
- ✓ Heating
- ✓ Parking
- ✓ Condition: New
- ✓ Terrace



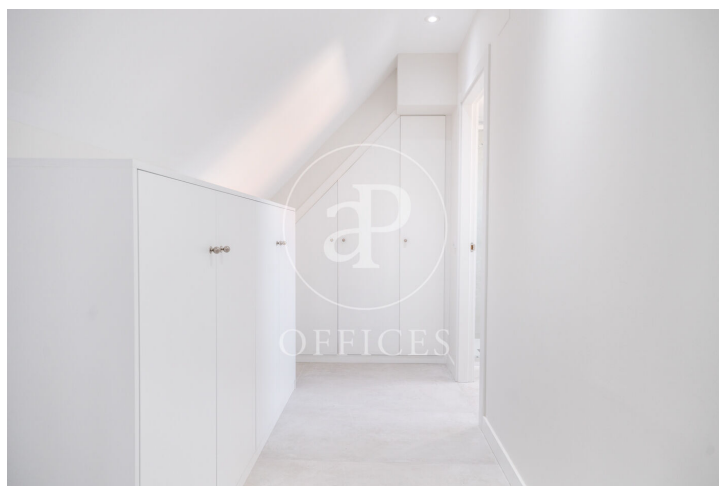
2,100 € | 172 m² | 12 €/m² | Charges 158,35

Completely exterior office with terrace, in the area of Plaza de Castilla. Calle Sófora. Offers a total rentable area of 162.55 m², of which 42.12 m² are private terrace. Possibility of renting parking space. The office consists of a work space, four offices and 2 complete bathrooms. It has unbeatable communications: METRO: Valdeacederas (L-1) 2 minutes / 200 metres from the Plaza de Castilla Interchange, (L-1, 9 and 10) 6 min / 500 metres, Cuzco (L-10) 11 min / 950 m. RENFE / NEIGHBOURHOODS: Chamartín: 1.8 km away, Nuevos Ministerios: 2.5 km away, BUSES: lines: 49, 60, 66, 124, 149, N22, N23, etc. CAR: Paseo Castellana, Bravo Murillo, M-30, A1, M-11, M-607, AIRPORT: 17 min / 14 km away. Can you imagine working here?









The information about any property is not binding to any offer or contract. Any verbal or written declaration made by aProperties with regards to the value or condition of the property should not be considered accurate or factual. The pictures make reference to some parts of the property at the times that they were taken. The areas, dimensions and distances that are given are approximate and should be checked by the client. The images are computer generated and are just an approximate indication of the real appearance of the property; these may change at any time. The information with regards to the property may also change at any time.

Contact us today for more information or to arrange a viewing

Tel: 91 800 54 65

oficinasmad@aproproperties.es

www.aoficinas.es